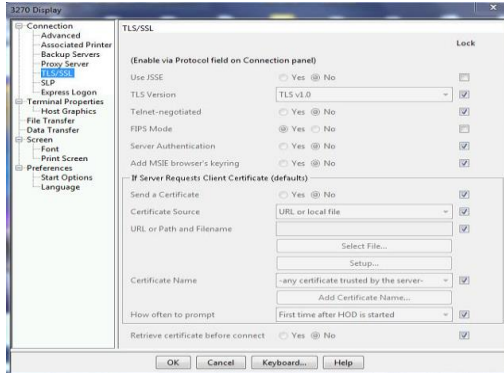
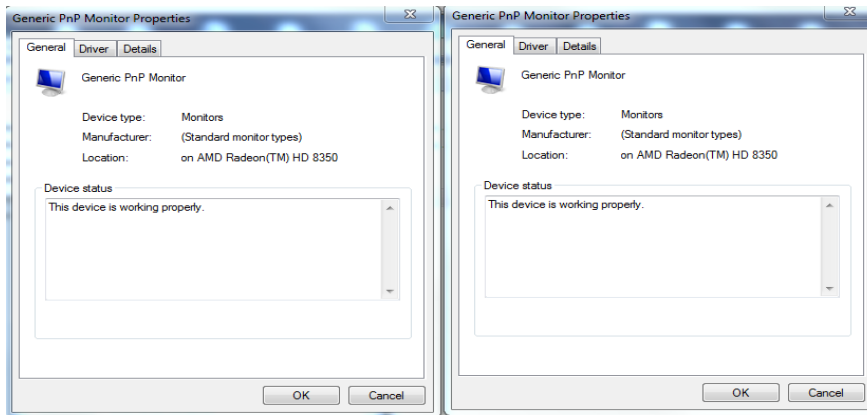


Users can recreate the Following Test case results consistently:

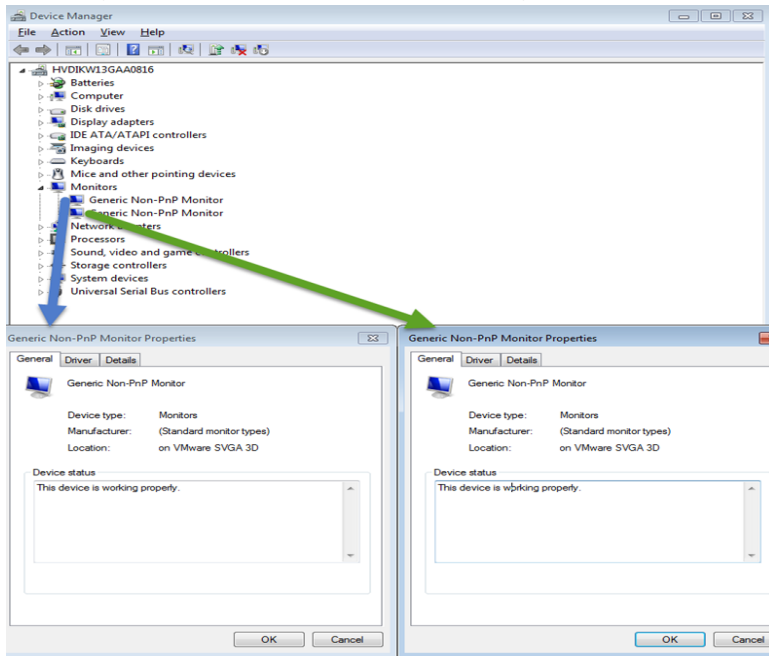
- Application works fine on 1.8uXXX calling JRE 1.6* (via DeploymentRuleSet permissions)
- Application fails when calling the same (subApp/terminal emulator) running JRE 1.8 only
- Application opens secure 3270 screen over https using TLSv1.0



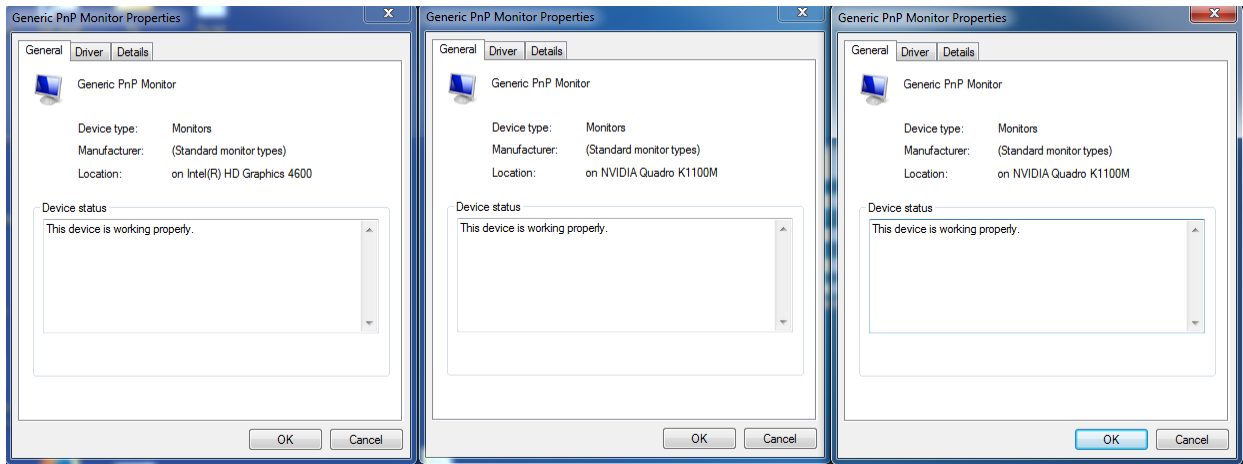
User# 1 (Application Developer) DesktopPC, Dual monitors, both connected to peripheral DVI card



User#2 (Client Environment SME/QA tester) Dual monitor on virtualized host (only 1 physical adapter)

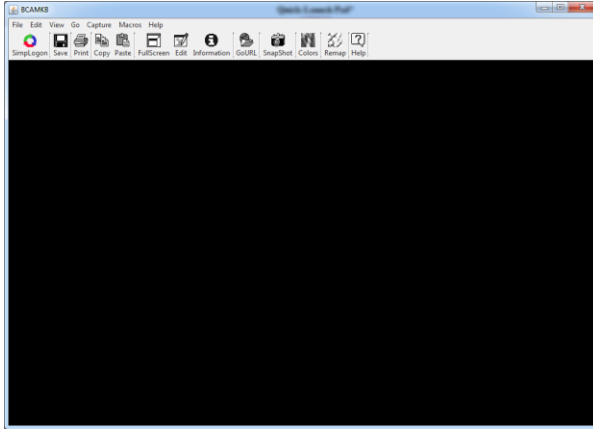


User #3 (Java Technology Mgr/SME) Laptop w/ 2 additional monitors connected (only screen#1 works)

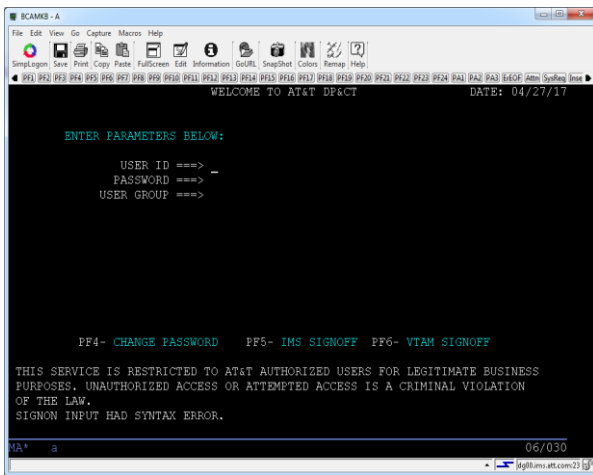


The following test case pattern of behavior has been consistently reproduced across all 3 users

Application failure screen shot (App terminal emulator screen opened on secondary screen)



Application failure screen shot (App terminal emulator screen opened on Primary screen)



- Behavior appears consistent with the following BugId from JDK 7

http://bugs.java.com/view_bug.do?bug_id=8003398